



HIRA (phospho Thr555) Polyclonal Antibody

Catalog No	YP-Ab-16643
Isotype	IgG
Reactivity	Human;Mouse
Applications	WB;IHC;IF;ELISA
Gene Name	HIRA
Protein Name	Protein HIRA
Immunogen	The antiserum was produced against synthesized peptide derived from human HIRA around the phosphorylation site of Thr555. AA range:521-570
Specificity	Phospho-HIRA (T555) Polyclonal Antibody detects endogenous levels of HIRA protein only when phosphorylated at T555.
Formulation	Liquid in PBS containing 50% glycerol, 0.5% BSA and 0.02% sodium azide.
Source	Polyclonal, Rabbit,IgG
Purification	The antibody was affinity-purified from rabbit antiserum by affinity-chromatography using epitope-specific immunogen.
Dilution	Immunohistochemistry: 1/100 - 1/300. Immunofluorescence: 1/200 - 1/1000. ELISA: 1/10000. Not yet tested in other applications.
Concentration	1 mg/ml
Purity	≥90%
Storage Stability	-20°C/1 year
Synonyms	HIRA; DGCR1; HIR; TUPLE1; Protein HIRA; TUP1-like enhancer of split protein 1
Observed Band	
Cell Pathway	Nucleus. Nucleus, PML body. Primarily, though not exclusively, localized to the nucleus. Localizes to PML bodies immediately prior to onset of senescence.
Tissue Specificity	Expressed at high levels in kidney, pancreas and skeletal muscle and at lower levels in brain, heart, liver, lung, and placenta.
Function	developmental stage:Expressed during embryogenesis.,disease:May play a part in the etiology of the DiGeorge syndrome (DGS), a developmental disorder due to an abnormal development of the third and fourth pharyngeal pouches. The clinical features include absence or hypoplasia of the thymus and parathyroid glands, cardiovascular malformations, facial dysplasia, a cleft palate and mental retardation.,function:Cooperates with ASF1A to promote replication-independent chromatin assembly. Required for the periodic repression of histone gene transcription during the cell cycle. Required for the formation of senescence-associated heterochromatin foci (SAHF) and efficient senescence-associated cell cycle exit.,PTM:Phosphorylated by CDK2/CCNA1 and CDK2/CCNE1 on Thr-555 in vitro. Also phosphorylated on Thr-555 and Ser-687 in vivo.,PTM:Sumoylated.,similarity:Belongs to the WD repeat HIR1 family.,simi

**Background**

This gene encodes a histone chaperone that preferentially places the variant histone H3.3 in nucleosomes. Orthologs of this gene in yeast, flies, and plants are necessary for the formation of transcriptionally silent heterochromatin. This gene plays an important role in the formation of the senescence-associated heterochromatin foci. These foci likely mediate the irreversible cell cycle changes that occur in senescent cells. It is considered the primary candidate gene in some haploinsufficiency syndromes such as DiGeorge syndrome, and insufficient production of the gene may disrupt normal embryonic development. [provided by RefSeq, Jul 2008],

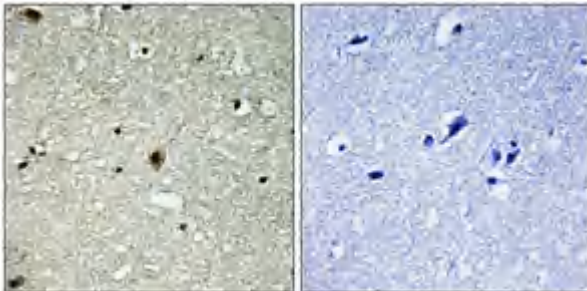
matters needing attention

Avoid repeated freezing and thawing!

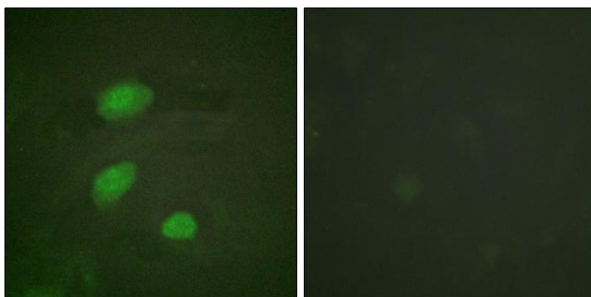
Usage suggestions

This product can be used in immunological reaction related experiments. For more information, please consult technical personnel.

Products Images



Immunohistochemical analysis of paraffin-embedded Human brain. Antibody was diluted at 1:100(4° overnight). High-pressure and temperature Tris-EDTA,pH8.0 was used for antigen retrieval. Negative control (right) obtained from antibody was pre-absorbed by immunogen peptide.



Immunofluorescence analysis of HeLa cells, using HIRA (Phospho-Thr555) Antibody. The picture on the right is blocked with the phospho peptide.